

# SiM Agility

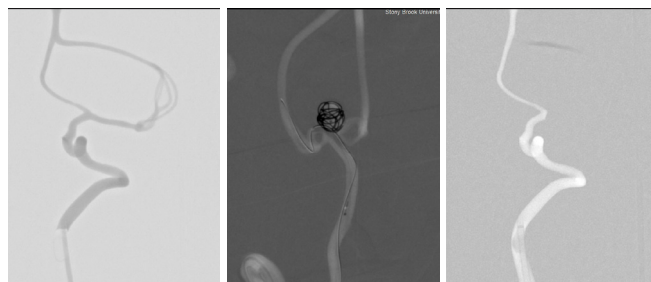
Portable High-Fidelity Neurovascular Flow System for clinicians and medical professionals



**Mentice's Physical SIM solutions are for device lifecycle and physician learning to improve the patient outcome and experience.**

As the clinical environment continues to evolve, novel devices and procedures are constantly being developed, presenting new opportunities to both the Medical Device Industry and Healthcare Systems. A solution that provides a realistic device feeling and clinical scenarios, easy to set up and guaranteed physician satisfaction – *introducing SiM Agility.*

**SIM Agility – a portable and robust solution with durable and interchangeable silicone providing the most advanced agile flow solution.**



## REFLEX SILICONE

Customizable Silicone Vasculature Models – **Durable multi-use silicone with high level of accuracy**

- Highest realism and tactile feedback through proprietary technology with the integration of 3D printing for silicone and proprietary luminal coating of silicone.
- All patient-specific anatomies are segmented from 3DRA or CTA scans through FDA-cleared and CE-marked software – competitive turnaround.
- Extensive 'ready-to-order' library of neuro, radial and thoraco-abdominal models.
- Multiple pathologies, including:
  - Unruptured aneurysms – coils, flow diverters, intrasaccular device, balloon remodeling technique (BRT), stent assisted coiling)
  - Ischemic stroke – Aspiration and stent retriever using ASIST Technology.
- Compatible with real contrast agents and fluoroscopy systems, including diagnostic applications.
- Translucent silicone models providing immediate device deployment visualization or camera when image modalities are not available.

## FEATURES & BENEFITS

- **Increase product quality and market/IP-IFU sustainability**
- **Pre-operative planning and patient-specific rehearsal**
- **True tactile feedback using real clinical devices**
- **Customizable platform – interchangeable cerebral/radial/aortic anatomies**
- **Low maintenance and straightforward operations offering fully adjustable systemic flow with built-in-heat, automatic priming and draining.**
- **Fast swap of Neuro anatomies – no need for complete draining**

To meet these emerging needs, SIM Agility was developed under a customer-oriented approach offering:

- Compact
- Convenient
- Ready-to-use solution
- Faster setup and breakdown time, with more straightforward operation
- Physiological flow rates and anatomies

The SIM Agility platform is a fully integrated system that duplicates the entire patient's vasculature from the extremities, through the aorta, and into the cerebral vessels.



## MDI

Mentice's solutions and services support medical device companies during the entire product cycle and allow for:

- Research and development
- Prototyping and research
- Optimizing clinical devices
- Reduced time to market, overall costs and increased product quality
- Convenient field demonstration tool effective for physician training on new devices

## HCS

In the clinical setting, physicians utilize the solution to acquire fundamental endovascular skills whilst also prepare themselves for challenging situations.

All of this 'ready-to-go' functionality enables pre-operative planning and patient-specific rehearsals - improving their competence and confidence by practicing procedures with the identical anatomy and pathology they will ultimately treat clinically.

## TECHNICAL SPECIFICATION

### Dimensions

Transport Case plus system, incl. accessories

**Weight:** 20.0 kg (44.0 lbs)

**Size:** 47 x 17 x 11 in / 120 x 43 x 27.5 cm

**System Only Weight:** 6.1 kg (13.5 lbs)

**Size:** 40 x 13 x 6.8 in / 102 x 33 x 17 cm

\* Recommended table size: 4 ft x 1.5 ft / 120 x 50 cm

### Set-up/breakdown

Average set-up time: 2-3 min

Average neuro anatomy swap time: 1 min

Power: 100-240 V

Fill time: 45 sec

Drain time: 3 min

### Functional data

Flow Rate: 3 - 13.5 ml/sec.

Tank Capacity: 1.5 L

Max Heat: 37 C in 15 minutes from room temperature

Systemic Pressure 85 to 110 mmHg, dependent on anatomy

### Packaging

Travel Friendly professional case - SKB model

### Add-ons

Left and/or Right Radial Access Module - anatomy plus support

### Consumables

Reflex Silicone Anatomies

SIMulant Blood liquid or powder

SIMulant Thrombus plus ASIST

delivery kit

Spare Parts Kit

Cleaning tablets

 [facebook.com/mentice](https://facebook.com/mentice)

 [linkedin.com/company/mentice](https://linkedin.com/company/mentice)

 [twitter.com/mentice](https://twitter.com/mentice)

 [youtube.com/user/mentice](https://youtube.com/user/mentice)

 [info@mentice.com](mailto:info@mentice.com)