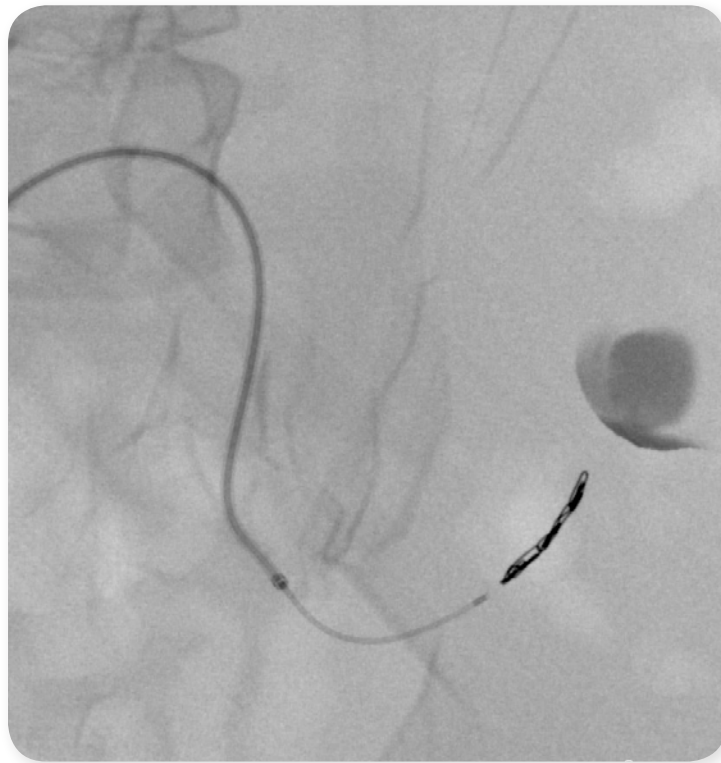


VASCULAR TRAUMA MANAGEMENT



HANDS-ON TRAINING FOR LIFE-SAVING ENDOVASCULAR TECHNIQUES

Mentice Vascular Trauma Management is designed to develop an understanding of endovascular treatment methods for trauma surgeons, vascular surgeons, interventional radiologists, emergency medicine professionals and their teams.

The module includes cases covering both REBOA (Resuscitative Endovascular Balloon Occlusion of the Aorta) and embolization techniques for internal hemorrhage control. It provides essential procedural and technical skills training for REBOA to temporize hemorrhagic shock such as blunt or penetrating abdominal trauma, pelvic fractures causing pelvic hemorrhage, ruptured abdominal aortic aneurysms, or a crashing trauma patient.

Additionally, cases provide staged training in embolization techniques for the more experienced teams, including correctly identifying and controlling pelvic hemorrhage as well as strategic decision-making.

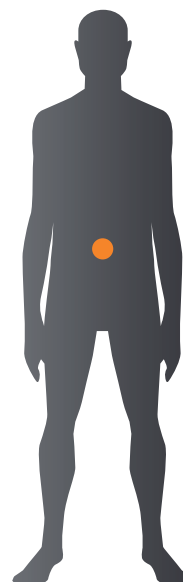
KEY TRAINING OBJECTIVES

- Understand and find correct location for REBOA balloon (zones I-III)
- Perform REBOA with or without fluoroscopy guidance
- Use selective angiography to identify source of bleeding
- Discuss and choose appropriate embolic material and access technique
- Perform embolization with appropriate materials in different locations and different size arteries
- Preserve circulation in adjacent vessel branches
- Avoid vasospasms in small vessels
- Manage complications

More training objectives can be found at mentice.com/vascular-trauma-management

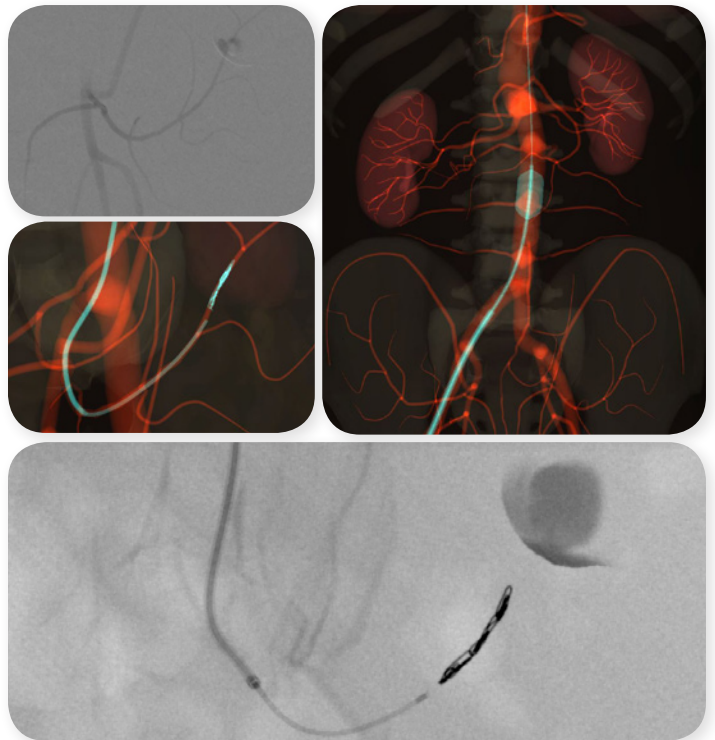
KEY BENEFITS

- Cross-specialty planning and communication
- Understanding endovascular management of vascular trauma
- Training the REBOA technique in a stepwise approach
- Individual or team training of various trauma embolization techniques
- Training of essential endovascular technical and manipulation skills



FEATURES AND FUNCTIONALITIES

- Realistic device and anatomy appearance
- Interactive hemodynamics and vital signs
- Support for multiple REBOA techniques
- Easy-to-use selection of embolization agents and delivery
- Gelatin sponge embolization (slurry/torpedo)
- Coil embolization
- Support for “sandwich” technique (coils and gelatin sponges combined)
- Bleeding sources in branches of internal iliac and lumbar arteries
- Tips and tricks on how to avoid embolization of non-target vessels
- Dynamic vasospasms based on tool navigation skills
- Dual leg support allowing REBOA in combination with embolization



THIS TRAINING MODULE IS DESIGNED FOR

- Trauma surgeons
- Vascular surgeons
- Interventional radiologists

RELATED MODULES

- Iliac and SFA intervention
- Prostatic artery embolization
- Transarterial chemoembolization
- Uterine artery embolization

CASE LAYOUT

- Total of 4 cases
- 1 case solely dedicated to REBOA
- 3 pelvic bleeding cases including REBOA

For case descriptions please contact us.

For more information, please visit mentice.com/vascular-trauma-management or email info@mentice.com