

VIST® ONE TEE

LIGHTWEIGHT SOLUTION FOR ADVANCED ECHOCARDIOGRAPHY TRAINING

Echocardiography is an essential part of novel and highly complex interventional procedures such as structural heart and electrophysiology interventions.

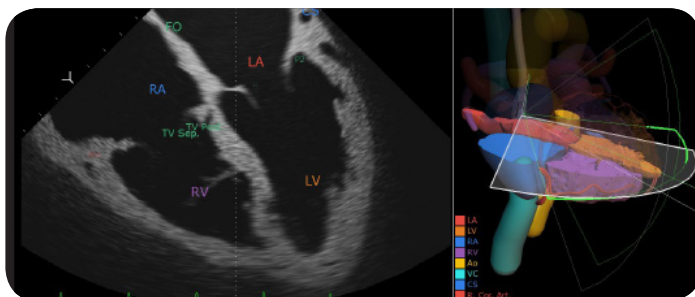
VIST® One TEE is designed to meet this increasing need for training with a cost effective and lightweight solution for interventionalists, echocardiographers and industry field staff.

Based on real patients' anatomies, the solution offers the most sophisticated real-time ultrasound simulation in the market. Users can practice hands-on under expert guidance and test their TEE skills both in obtaining and interpreting views.

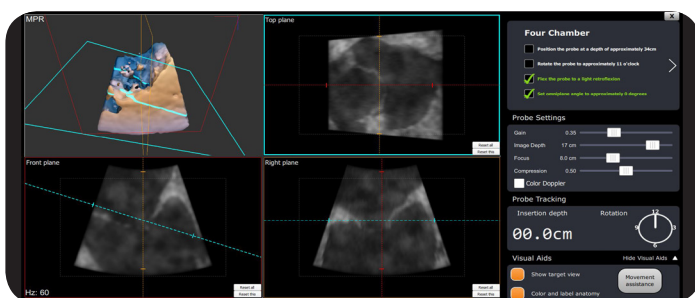


KEY BENEFITS

- Improve training efficiency with a highly realistic environment for hands-on fundamental TEE training
- Experience the latest echo techniques available within the only simulation offering real-time and synchronized 2D echo, 3D echo and MPR
- Ability to track progress through assessment of TEE skills
- Ease of use – advanced touch controls, trackball and true to life TEE probe
- Highly portable and flexible, suitable for hand luggage
- Perfect teamwork – the only platform offering intraoperative TEE with real-time device manipulation across all modalities (in combination with a VIST® G5)



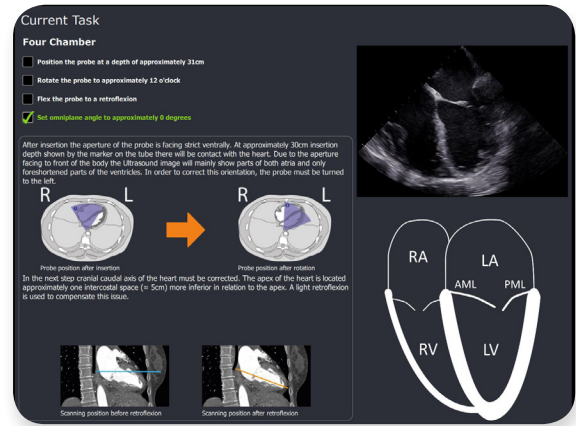
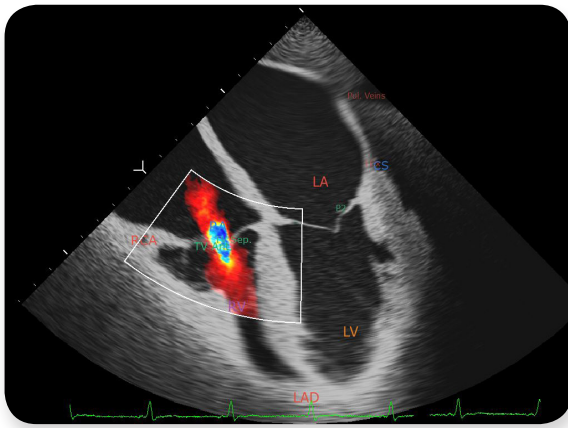
ADVANCED VISUAL GUIDANCE



MULTIPLANAR RECONSTRUCTION (MPR)

LEARNING OBJECTIVES

- Acquire fundamental TEE skills
- Obtain echo views in a safe and efficient way
- Understand the basic functions of a TEE probe
- Learn and enhance TEE probe manipulation skills
- Identify important structures of the heart
- Optimize your protocol for a comprehensive TEE examination
- Master different echo modes
- Learn how to manipulate and interpret 3D echo

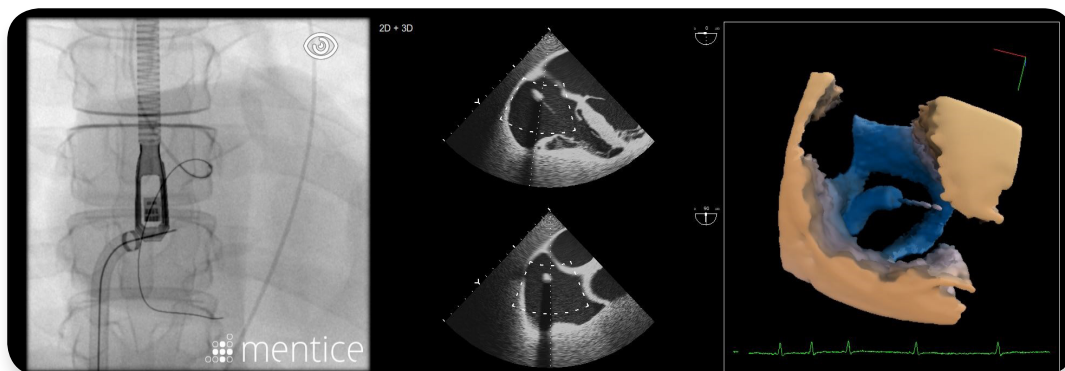


FEATURES AND FUNCTIONALITIES

- Highly detailed patient cases based on 4D CT data
- 2D and biplane echo
- Real-time and synchronized 3D echo
- Real-time and synchronized MPR
- Measurements, e.g. PISA
- Color doppler
- Expert guidance throughout examination
- Graphical guidance
- Real TEE reference images
- Schematic reference images
- Assessment of skills to obtain views
- Assessment of interpretation skills through questionnaires
- Efficiency metrics for obtaining views
- Graphical metrics to visualize progress
- Trackball and touch screen for ease of use
- TEE probe based on real vendor's probes
- Haptic feedback for highest realism
- Highly portable robust case, suitable for hand luggage (dimensions: L55.8cm x W35.5cm x D28.8cm)

TOGETHER WITH A VIST® G5 (TEE ADD-ON)

- Adding TEE to interventional procedures, e.g. MVR, LAAO, EP, TP, ASD/PFO etc.
- Team training for complex procedures
- Synchronized and real-time endovascular device manipulation across all modalities



For more information email info@mentice.com